

marad@ut.ac.ir :

// : // :

Rapid Fluorescent Focus Inhibition) RFFIT

() :

() (test

, t

SPSS

(% /)

()

()

(Positive predictive value)

% /

% /

(Mongoose)

%

%

%

%

:

:

:

(Zeynali et al. 1999)

)

(

.()

%

.(WHO 2006; CDC 2004)

:

)

(

)

)

(RFFIT)

(

(

.(Murphy et al. 1999

)

)

% /

(

Chi)

SPSS

(Fisher exact test)

(square

(

)

Pearson correlation)

(Murphy et al. 1999)

(student t-test)

(coefficient

Smirnov test)

Petrie)

(Kolmogorov

Nadin et al.

)

.(and Watson 1999

.(2003

:

) (Mongoose) ()
 Fisher exact) .((test (% /)

.(P= /)

)
 % (.()

% % %
 % (Kolmogorov Smirnov)

P= / :)

.(P= /

()
 () .()
 (Student t-test)

)
) df = P= /
 « » .(P= / : $\chi^2 = /$
 (P= /) / .($\chi^2 = /$ df= P= /
 (P= /) /

$\chi^2 = /$ df= P= /)

.($\chi^2 = /$ df= P= /

:

.()

.()

.()

.()

.(% /)

()

% / % /

;)

.(

% /

.(Zeynali et al. 1999)

% /

%

)

.(

/)

)

(

(% /)

.(

%

"

()

"

%

:

% /

.()

:

,

.

.()

()

)

.(

"

.

.(Max 1987)

:

.(%)

,

() ()

/ / / / / / / / / /

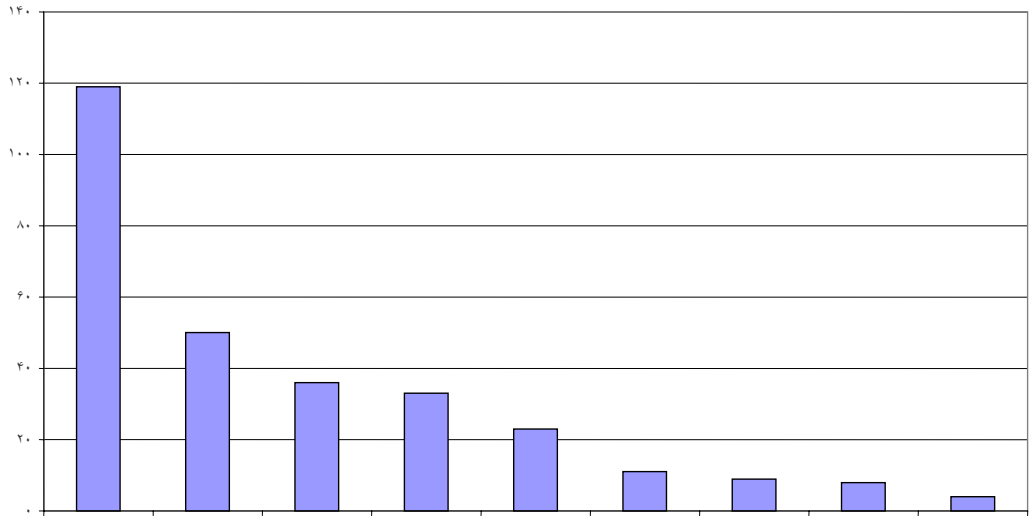
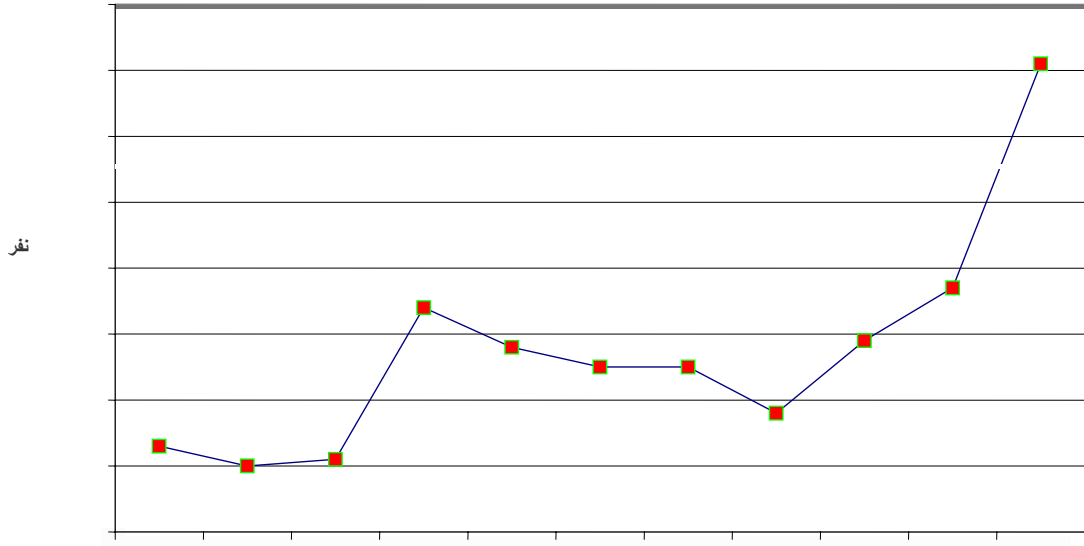
()

/ /
/ /
/ /
/ /

()

/
/
/
/

/



- Center for disease s control (CDC), 2004. National center for infectious diseases, Atlanta, Georgia, USA. Annual reports, pp.1-8.
- Max, J., 1987. *Appel virus infection of Carnivores*. Elsevier Science Publishers B.V. pp.163-176.
- Murphy, F.A., Gibbs, E.J. Horzinek, M.C. and Studdert, M.J., 1999. *Veterinary Virology*, Academic Press. 432.
- Nadin-Daris, S.A., Simani S. and Armstrang, J., 2003. Molecular and antigenic characterization of rabies viruses from Iran identifies variant with distinct Epidemiological origins. *Epidemiological Infect*, **131**(6), pp.777-790.
- Petrie, A. and Watson, P., 1999. *Statistics for Veterinary and Animal Science*, 1st. Edition Book Published by Blackwell. Science Ltd, pp.84-212. (MPVM)
- Zeynali, M., Fayaz, A. and Nadim, A., 1999. Animal bites and rabies situation in Iran. *Archive of Iranian Medicine*, **2**(3), pp.120-124.
- WHO, 2006. Human and animal rabies, Available from:[on line]. Available from: <http://www.who.org> [cited 15 November 2005].

)

(