

DNA

shojaee1980@yahoo.com :

// : // :

RH

B1

PCR

DNA

bp

PCR

DNA

C56

PCR

PCR

Balb/c

RH

.(Bastien 2002)

(Ahn et al. 1997) .

(Van E van et al. 1991)

.(Raizman and Neva 1975)

Hafid et al.)

.(2001

IgM

Van Knapen et al. 1977; Araujo and
.(Remington 1980

%

.(Bastien 2002)

IgG

DNA

PCR

DNA

B₁

PCR

(
)
 5'ATTGCCCGTCCAAACTGCAACAACCTG
 5'TGGGTCTACGTCGATGGCATGACAA
 DNA . C

QIA Gene

PCR

Hafid

%

PCR

Huskinson .

ELISA

(Huskinson et al. 1989)

ELISA

C56

)
 SDS – PAGE (

PCR

Weiss 1995;)

PCR

()

Angel et al. 1997; Hafied et al. 1992; Nguyen
 (et al. 1996; Jose et al. 1993

PCR

bp

PCR

DNA)

(Grover et al. 1990)

%

PCR ,

Lamoril et al.) %

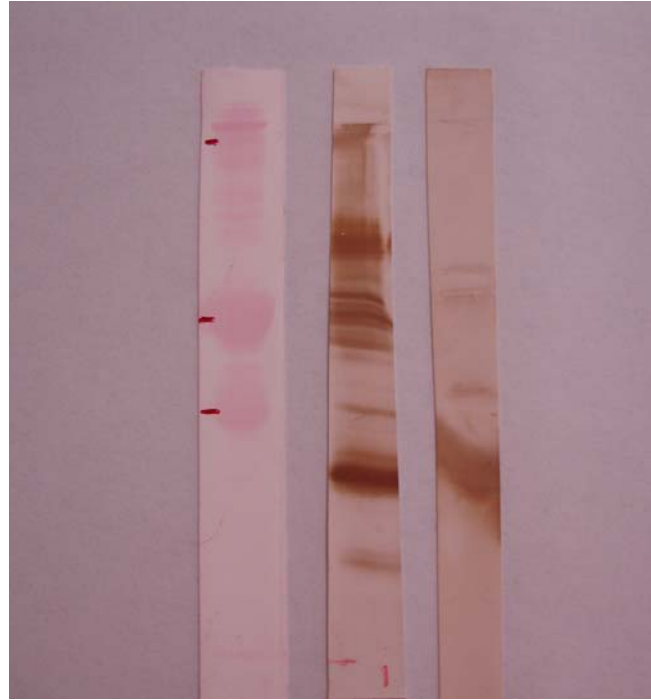
(Filice et al. 1993) % (1996

DNA

C56

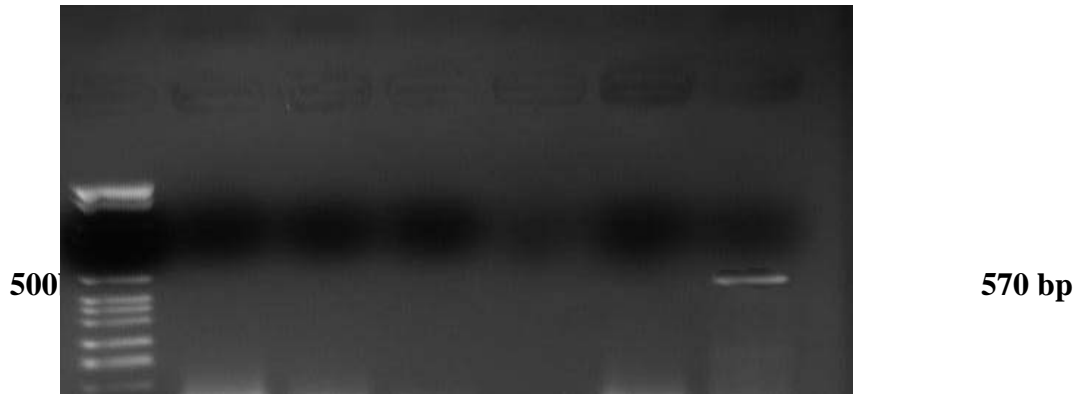
:

:



a b c

: b (IgG) : a
: c



500

570 bp

c b a

DNA PCR
DNA PCR : a

(Roche) : b

References:

- Ahn, M.H., Hyum, K.H., Kang, J. and Min, D.Y., 1997. Partially purified *Toxoplasma gondii* antigens by immunoaffinity chromatography. *Korean J Parasitol*, **35**(4), pp.251-258.
- Angel, S.O., Matrajt, M., Margarit, J., Nigro, M., Illescas, E., Pszeny, V., Amendoeira, M.R.R., Guornera, E. and Garberi, J.C., 1997. Screening for active toxoplasmosis in patients by DAN hybridization with the ABGTg7 probe in blood samples. *J Clin Microbiol*, **35**(3), pp.591-595.
- Araujo, F.G. and Remington, J.S., 1980. Antigenemia in recently acquired acute toxoplasmosis. *Infect Dis*, **41**(22), pp.144-150.
- Bastien, P., 2002. Diagnosis, molecular diagnosis of toxoplasmosis. *Trans Roy Soc Trop Med Hyg*, **96**(3), pp.205-215.
- Filice, G.A., Hitt, J.A., Mitchell, C.D., Blackstad, M. and Sorensen, S.W., 1993. Diagnosis of *Toxoplasma* parasitemia in patients with AIDS by gene detection after amplification with polymerase chain reaction. *J Clin Microbiol*, **31**(9), pp.2327-2331.
- Grover, C.M., Thulliez, P., Remington, J., Boothroyd, J.C., 1990. Rapid prenatal diagnosis of congenital *Toxoplasma* infection by using polymerase chain reaction and amniotic fluid. *J Clin Microbiol*, **28**(10), pp.2297-2301.
- Hafid, J., Flori, P., Raberin, H. and Tran Manh Sung, R., 2001. Comparison of PCR, capture ELISA and immunoblotting for detection of *Toxoplasma gondii* in infected mice. *J Med Microbiol*, **50**(5), pp.1100-1104.
- Hafid, J., Raberin, B., Pozzetto, Z.Y.A., Tran Manh Sung, M. and Gaudin, J., 1992. Comparison of excretory/Secretory and circulating antigens of *Toxoplasma gondii* by enzyme immunoassay and immunoblotting. *Int. J. Parasitol*, **22**(8), pp.1083-1088.
- Huskinson, J., Stepic-Biek, P. and Remington, J.S., 1989. Detection of antigens in during acute toxoplasmosis. *J Clin Microbiol*, **27**(5), pp.1099-1101.
- Jose, A.W.L., Chatterton, J.M.W., Evans, R. and Ho-Yen, D.O., 1993. *Toxoplasma* polymerase chain reaction on experimental blood samples. *J Med Microbiol*, **38**(1), pp.38-43.
- Lamoril, J.C., Molina, J.M., De Gouvello, A., Garin, Y.J., Deybach J.C., Modai, J. and Derouin, F., 1996. Detection by PCR of *Toxoplasma gondii* in blood in the diagnosis of cerebral toxoplasmosis in patients with AIDS. *J Clin Pathol*, **49**(1), pp.89-92.
- Nguyen, T.D., De Kesel, M., Bigaignon, G., Hoet, P., Pazzaglia, G., Lammens, M. and Delmee, M., 1996. Detection of *Toxoplasma gondii* tachyzoites and bradyzoites in blood, urine and brain of infected mice. *Clin Diag Lab Immunol*, **3**(6), pp.635-639.
- Raizman, R.E. and Neva, F.A., 1975. Detection of circulating antigens in acute experimental infection with *Toxoplasma gondii*. *Infect Dis*, **132**(1), pp.44-48.
- Van E Van, D.E., Melchers, W., Galama, J., Camps, W., Meuwissen, J., 1991. Identification of *Toxoplasma gondii* infections by B₁ gene amplification. *J Clin Microbiol*, **29**(10), pp.2120-2125.
- Van Knapen, F. and Panggabean, S.O., 1977. Detection of circulating antigen during acute infections with *Toxoplasma gondii* by enzyme linked immunosorbent assay. *J Clin Microbiol*, **6**(6), pp.545-547.
- Weiss, J.B., 1995. DNA probes and PCR for diagnosis of parasitic infections. *Clin Microbiol Res*, **3**(1), pp.113-130.