

- : ,

:

:

:

kamala1761@yahoo.com :

:

// : // :

:

:

(Brass)

:

:

/

/

()

/

/

:

:

:

:

)

.(

Brass)

.(Bongaarts 1978)

. (and Rashad 1992

.(Mc Donald et al. 1981)

)

(

.(Adlakha A. et al. 1991)

% /

(")

.(Udjo 1997)

()

(Brass)

P P/F ()
(Fertility) F (Parity) /

P/F

:

) /

(/

" "

(/) /

()

(/) /

" "

.()

" "

"

"

() :

()

:

P/F

()

/

/

/

/ /

/

/

/

/

(/ + /)

/

/

/

/

(P_i)

(F_i)

P_i/ F_i P_i/ F_i

P/F

P_i

F_i

P_i/ F_i

F_i

P_i/ F_i

/

P/ F

P_i/ F_i

F_i

F_i P_i

P_i

P/F

/

) P_i

F_i

P/F

/

(

F_i

k₂ k₁

F_i

F_i

P/F

) P_i

F_i

(

F_i

(P_i)

P/F

(F_i)

P_i/ F_i

P_i/ F_i

/ /

F_i

/

P_i / F_i

/

P_i / F_i

/

F_i

P_i

(/ /)

P_i / F_i

$P / F = /$

F_i

/

/

()

:

/

/

P/F

()

k_1

/

()

/

()

()

()

()

/

/

k_2

k_1

/

k_3

/

/

:

:

/

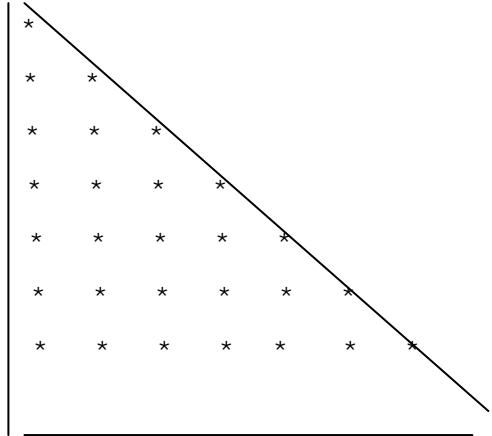
.

.

/ ...

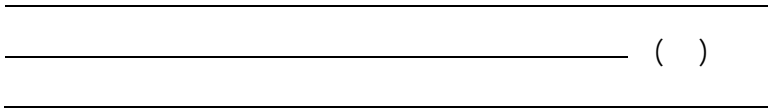


* *
* *
* *
* *
* *
* *
* *



()

-



()



(-

()

/	/							
/	/	/						
/	/	/	/					
/	1 /	/	6 /	/				
/	/	/	/	/	/			
	/	/	/	/	/	/		
	/	/	/	/	/	/	/	/

(

()

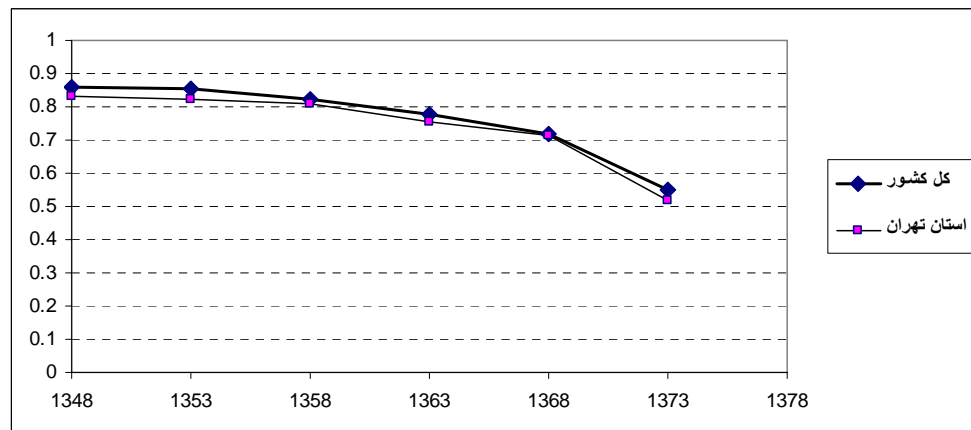
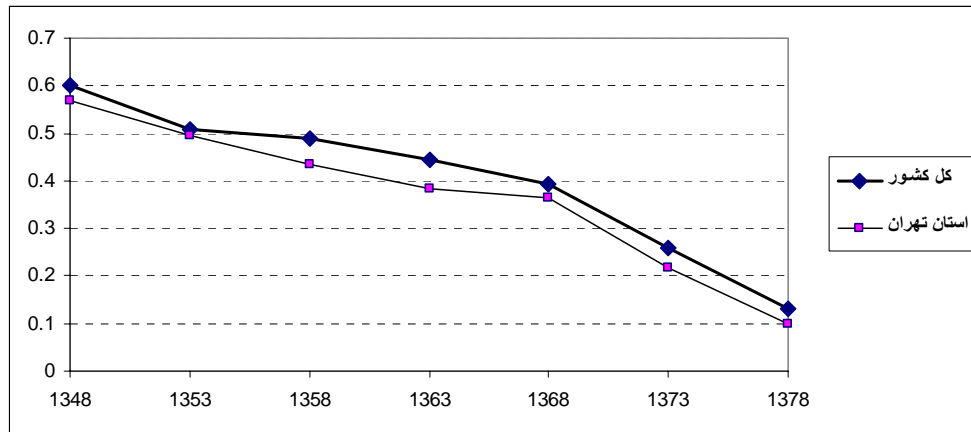
/								
/	/							
/	/	/						
/	/	/	/					
/	/	/	/	/				
/	/	/	/	/	/			
/	/	/	/	/	/	/		/

(

()

/	/	/	/	/	/	/	/	/
/	/	/	/	/	/	/		
/	/	/	/	/				
/	/	/	/					
/	/	/						
/	/							
/								

()	P_i	F_i	P_i / F_i	F_i $K_1 = \frac{\sum_{i=3}^7 \frac{P_i}{F_i}}{5} = /$	F_i $K_2 = \frac{P_2}{F_2} = /$	F_i $K_3 = \frac{k_1 + k_2}{2} = /$
	/	/	/	/	/	/
	/	/	/	/	/	/
	/	/	/	/	/	/
	/	/	/	/	/	/
	/	/	/	/	/	/
	/	/	/	/	/	/
	/	/	/	/	/	/



- Bongaarts, J., 1978. A frame work for analyzing the proximate determinants of fertility. *Population and Development Review*, 4(1), pp.105-132.
- Brass, W. and Rashad, H., 1992. Exploratory Demographic Analysis of Imperfect Maternity Histories to Determine Levels and Trends of Fertility. The analysis of Maternity to Determine Levels and Trends in Fertility, IUSSP Ordinal Edition, Liege, pp.153-181.
- Mc Donald, P.F., Ruzicka, L.F., and Caldwell, J.C., 1981. Interrelations between nuptiality and fertility: the evidence from the world fertility survey. In: world fertility survey Conference 1980. Record of proceedings, 2, pp.77-126.
- Udjo, E.O., 1997. Marital patterns and fertility in South Africa: *The evidence from the 1996 population census*. Pretoria, South Africa, Directorate of Analysis, Statistics South Africa. 20 ps.
- Adlakha, A., Ayad, M. and Kumar, S., 1991. The role of nuptiality in fertility decline: *a comparative analysis. Paper presented at the Demographic and Health survey world conference*, Washington D.C.