

r.nabizadeh@tums.ac.ir :

(NTU )

% / / /

% / % /

/

% / % / % /

% /

(% )

Microsoft Excel SPSS

% / :

% /

% /

:

% /

:

% / % /

"

"

.( ) %

)

/

.( a

( / )

)

% /

WHO/ UNICEF/ WSSCC )

.(

.(2000

/

%

WHO 2000; Cortruvo )

et al. 1999; ADB/UNDP/UNESCAP/WHO  
.(2006

Asian

Development Bank (ADB)

United Nations Development

Programme (UNDP)

United Nations

Economic and Social Commission for Asia  
and the Pacific(UNSCAP)

,World Health Organization (WHO)

.(

)

%

%

-

.( )

% /

%

)

% /

.(

(WHO 2006) ( )

/

/

)

(

/...

---

pH

/  
(WHO 1996)

(On line)

(Ainsworth 2004)

(WHO 2006)

/ /

(WHO 1997)

Oxidation-

-

Reduction Potential (ORP)

ORP

ORP

(WHO 2006)

( b )

( )

NTU

(% / )

APHA/AWWA/WPCF )

SPSS

(2005

Microsoft Excel

( Cross Sectional)

/

//

.( )

//

%

.( )

%

% (d)

α= %

:( )

$$N=Z^2_{1-\alpha/2} \times P(1-P)/d^2 \quad ( )$$

$$=( / ) \times / \times / \div ( / ) =$$

/

(NTU )

)

(

.( ) % / / /

%

/

/

% ( )

/

(MPN/100 mL) /

(MPN/100 mL)

.( )

/

pH

/...

---

NTU / %  
/ NTU /  
pH %  
/ /  
(% / )  
% / % / % /  
/ /  
pH  
% /  
pH  
pH  
% / % / % /  
/ pH= / /  
)  
(  
(% / )  
( )  
% /  
(% / ) / /  
(% / )  
( )  
(% / )  
(% ) / /  
(% ) % /  
//  
// (WHO 1996)  
( ) % / /



) % /

% % (

% / ( )

( )

(% )

% /

( )

NTU

:

% /

% /

(% / )

( )

/

% /

% /

/

% /

% /

/ / /

( )

l...

---

---

\*

---

/

/

/

/

/

/

/

/

/

/

/

/

/

---

/ - - - -

---

(%)

\*

$\leq$  NTU     $\leq$  NTU    / / /

\*

|   |   |   |   |   |   |
|---|---|---|---|---|---|
| / | / | / | / | / | / |
| / | / | / | / | / | / |
| / | / | / | / | / | / |
| / | / | / | / | / | / |
| / | / | / | / | / | / |
| / | / | / | / | / | / |
| / | / | / | / | / | / |
| / | / | / | / | / | / |
| / | / | / | / | / | / |
| / | / | / | / | / | / |
| / | / | / | / | / | / |
| / | / | / | / | / | / |
| / | / | / | / | / | / |
| / | / | / | / | / | / |
| / | / | / | / | / | / |
| / | / | / | / | / | / |

\*

( WHO)

(%)

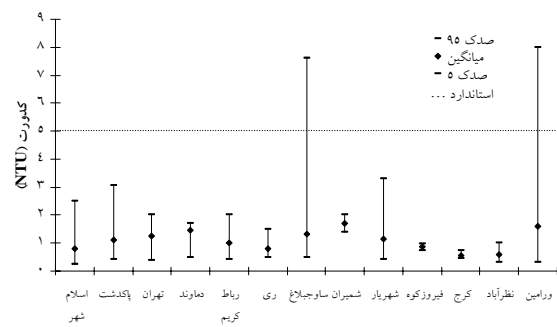
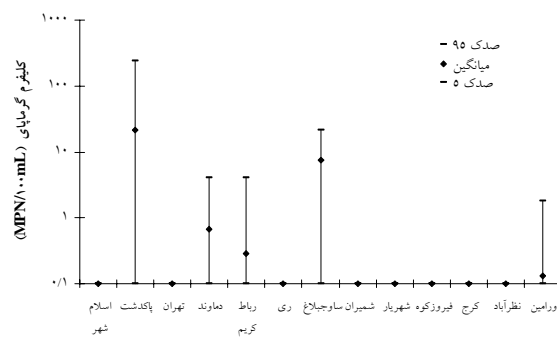
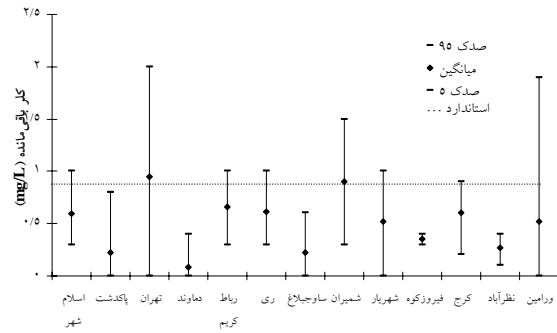
( )

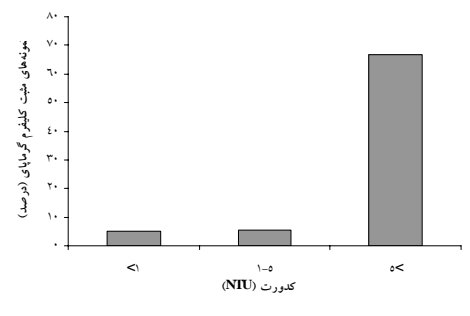
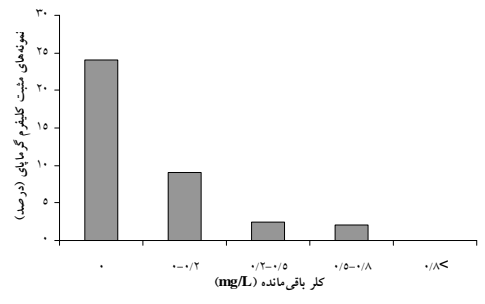
>

<

:







a

Development Goals?. ADB. *Philippines*. pp 9-22

Cortruvo, J.A., Graun, G. F. and Hearne N., 1999. Providing safe drinking water in small systems. *NSF-WHO*.

World Health Organization., 1996. Guidelines for drinking-water quality. 2nd ed., vol. 2. Health criteria and other supporting information. *WHO, Geneva*.

World Health Organization., 1997. Guidelines for drinking-water quality. 2nd ed., vol. 3. *WHO, Geneva*.

World Health Organization., 2000. the world health report: Making a difference, *WHO, Geneva*.

World Health Organization., 2006. Guidelines for drinking water quality Vol. 1. Recommendations. WHO. Geneva. 1<sup>st</sup> addendum to 3<sup>rd</sup> Ed.

World Health Organization, United Nations Children's Fund, Water Supply and Sanitation Collaborative Council., 2000. Global Water Supply and Sanitation Assessment 2000 Report, *WHO- UNICEF, Geneva*.

Ainsworth, R., 2004. Safe Piped Water- Managing Microbial Water Quality in Piped Distribution Systems. 1<sup>Th</sup> published, *IWA, UK*.

American Public Health Association, American Water Works Association, Water Pollution Control Federation., 2005. Standard methods for the examination of water and wastewater, 21st Ed., APHA-AWWA-WPCF Washington DC. USA.

Asian Development Bank, United Nations Development Programme, United Nations Economic and Social Commission for Asia and the Pacific and World Health Organization., 2006. Asia water watch 2015: Are Countries in Asia on Track to Meet Target 10 of the Millennium