

af_bakhtiari@yahoo.com :

-

// : // :

Neo-adjavant therapy

(% /)

%

%

%

% /

.(Gizlice 1997)

(Disease Free Survival)

.(Brow 2000)

Neo-adjavant therapy

)

(

TNM

Stage (Tumor, Lyphnode, Metastas)

(Berl et al. 1995)

)

(

(Chu et al. 1996)

(-)

spss

Albain et al. 1994;Walker et al.)

Edison et al.) (1996; Kroman et al. 1998

(1994; Boyer et al. 1999

(Ferno 1998; Tabar et al. 1999)

Byrne et al. 1994;)

Touboul et al. 2000; Willner et al. 1997;

(Kim et al. 2005

COX

δ

Log(-Log S(t))

COX

COX

%

/ ±

/ ±

%

% /

III II

(% / % /)

(% /)

/ ±

)

(

%

%

Touboul et al.) % % / %

(2000; Willner et al. 1997; Kim et al. 2005

Breast Conserving Treatment(BCT)

Touboul et al. 2000; Willner et al. 1997;) *I* %

(Kim et al. 2005

(P= /) %

%

(%) % (None)

n_2

(P= /)

COX

δ (RR)

) % / / / /

.(

Moran and Haffy 2002; Showronek)

(et al. 2002 COX

)

(

Showronek et al. 2002;)
Abrial et al. 2005; Sakamoto and
(Takashima 2003

()

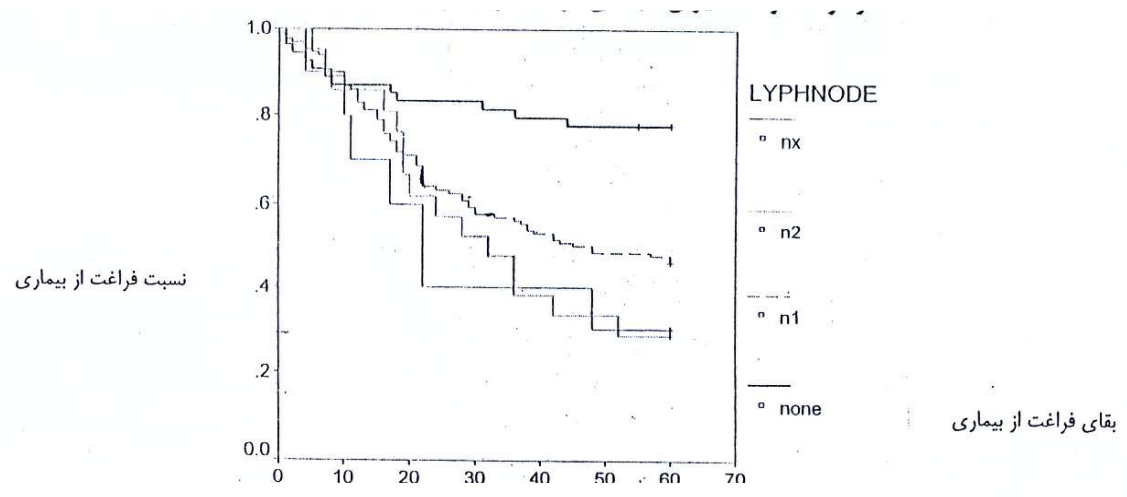
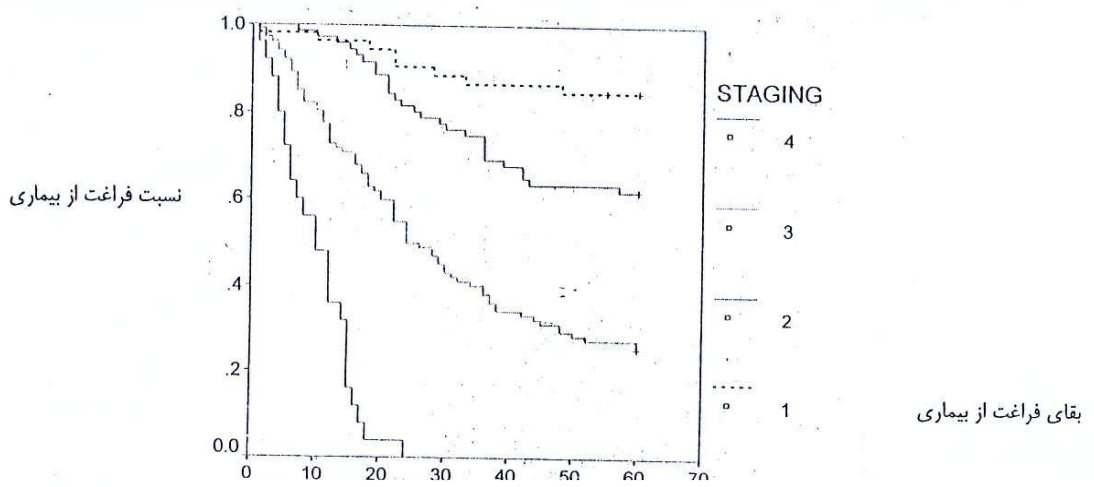
Albain et al.)
1994; Walker et al.1996; Kroman et al.
(1998

Nuclear grade

(%)
(/)
(/)
(/)
(/)
(/)

l...

P-value		P-value		P-value		
()	()	()	
/	(/ /)	/	/	(/ /)	/	<
/	(/ /)	/	/	(/ /)	/	≥ 50
/	(/ /)	/	/	(/ /)	/	
/	(/ /)	/	/	(/ /)	/	
/	(/ /)	/	/	(/ /)	/	
/	(/ /)	/	/	(/ /)	/	
/	(/ /)	/	/	(/ /)	/	<i>None</i>
/	(/ /)	/	/	(/ /)	/	<i>N₁</i>
/	(/ /)	/	/	(/ /)	/	<i>N₂</i>
						<i>N_x</i>
/	(/ /)	/	/	(/ /)	/	<i>T₁</i>
/	(/ /)	/	/	(/ /)	/	<i>T₂</i>
/	(/ /)	/	/	(/ /)	/	<i>T₃</i>
/	(/ /)	/	/	(/ - /)	/	<i>T₄</i>



- Gizlice, Z., 1997. Breast cancer incidence mortality and survival in North Carolina. <http://www.schs.schs.state.nc.us/SCHS/September>.
- Kroman, N., Jensen, M.B., Wohlfahrt, J., Mouridsen, H.T., Anderson, P.K. and Melbye, M., 1998. Factors influencing the effect of age on prognosis in breast cancer: Population based study. *British Medical Journal*. **320**, pp.447-9.
- Kim, K.J., Huh, S. and Yang, S.H., 2005. Treatment results and prognostic factors of early breast cancer treated with a breast conserving operation and radiotherapy. *Jpn J clin oncol*. **15** (3), pp.126-33.
- Moran, M.S. and Haffty, B.G., 2002. Local regional breast cancer recurrence: Prognostic groups based on patterns of failure. *Breast J*. **8**(2), pp. 81-7.
- Showronek, J. and Piotrowski, T., 2002. Locoregional recurrence of breast cancer: a retrospective comparison of treatment methods. *Neoplasma*. **49**(6), pp. 426-31.
- Sakamoto, G. and Takashima, S. 2003. Long- term results of breast- Conserving treatment for early stage breast cancer in Japanese women. *Jpn J clin Oncol*. **33**(2), pp.61-7.
- Tabar, L., Duffy, S.W., Vitak, B., Chen, H.H. and Prevost, T.C., 1999. The natural of breast carcinoma: what have we learned from screening? *Cancer*. **86**, pp.449-53.
- Touboul, E., Buffat, L. and Belkacemi, Y., 2000. Local recurrences and distant metastases after breast - Conserving surgery and radiation therapy for early breast cancer. *Int Radiat oncol Biol phys*. **46**(3), pp. 683-4.
- Walker, R.A., Lees, E., Webb, M.B. and Dearing, S.J., 1996. Breast carcinomas occurring in young woman (< 35 years) are different. *British Journal of Cancer* **74**, pp.1796-1800.
- Willner, J., Kiricuta, I.C. and Kolb, I.O., 1997. Locoregional recurrence of breast cancer following mastectomy. *Int j Radiat oncol Biol phys*. **37**(4), pp. 853-63.
- Abrial, C., Mouret- Reynier, M.A. and Amat, S., 2005. Tumor Parameters, Clinical and pathological responses, medical management, and survival through time on 710 operable breast cancers. *Med Oncol*. **22**(3), pp.233-40.
- Albain, K.S., Allred, D.C. and Clark, G.M., 1994. Breast cancer outcome and predictors of outcome: are there age differentials? *Monograph of National cancer institute*. **6**, pp. 35-42.
- Brow, P.H.UK., 2000. Death rates from breast cancer fall by a third. *British Medical Journal*. **321**, pp.849-52.
- Beral, V., Hermon, C., Reeves, G. and Peto R., 1995. Sudden fall and wales. *Lancet* **343**, pp.1642-4.
- Boyer-Chammard, A., Taylor, T.H. and Anton Culver, H., 1999. Survival differences in breast cancer among racial / ethnic-groups: a population based study. *Cancer Detection and Prevention* **23**, pp.463-73.
- Byrne, C., Smart, C.R., Chu, K.C. and Hartman, W.H., 1994. Survival advantage differences by age. Evaluation of the extended follow- up of the breast cancer detection demonstration project. *Cancer* **74**, pp.301-10.
- Chu, C., Tarane, R.E., Kessler, L.G., Hankey, R.E., Kessler, L.G., Hankey, B.F., Miller, B.A. and Edwards, B.K., 1996. Recent trends in U.S. breast cancer incidence, survival and mortality rates. *Journal of the National cancer institute*. **88**, pp.1571-9.
- Edison, M., Becker, T.M. and Wiggin, C.L., 1994. Breast cancer among hispanics, American Indians and non-Hispanic Whites in New Mexico. *International Journal of Epidemiology*. **23**, pp.231-6.
- Ferno, M., 1998. Prognostic factors in breast cancer : a brief review. **18**, pp.2167-710.